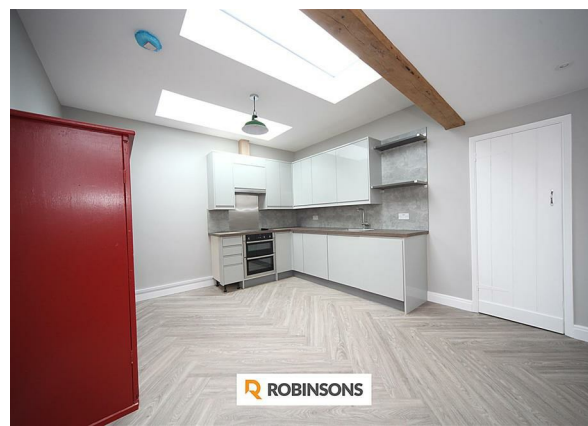
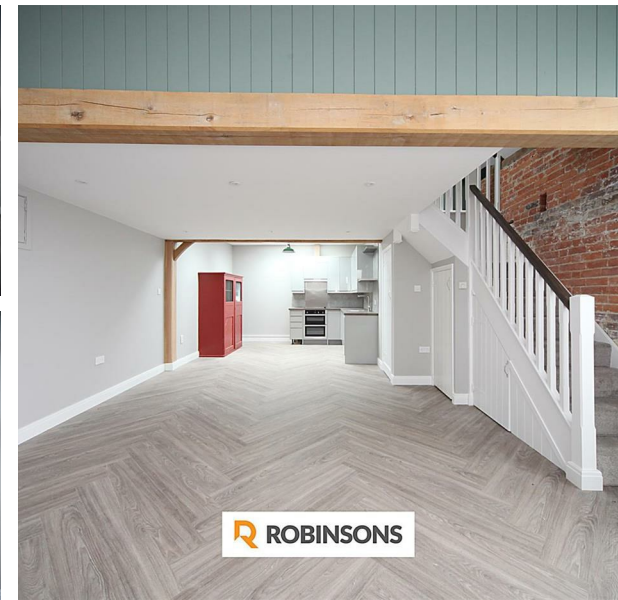
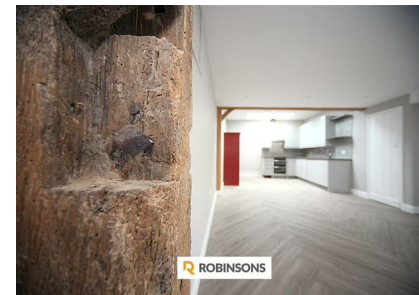
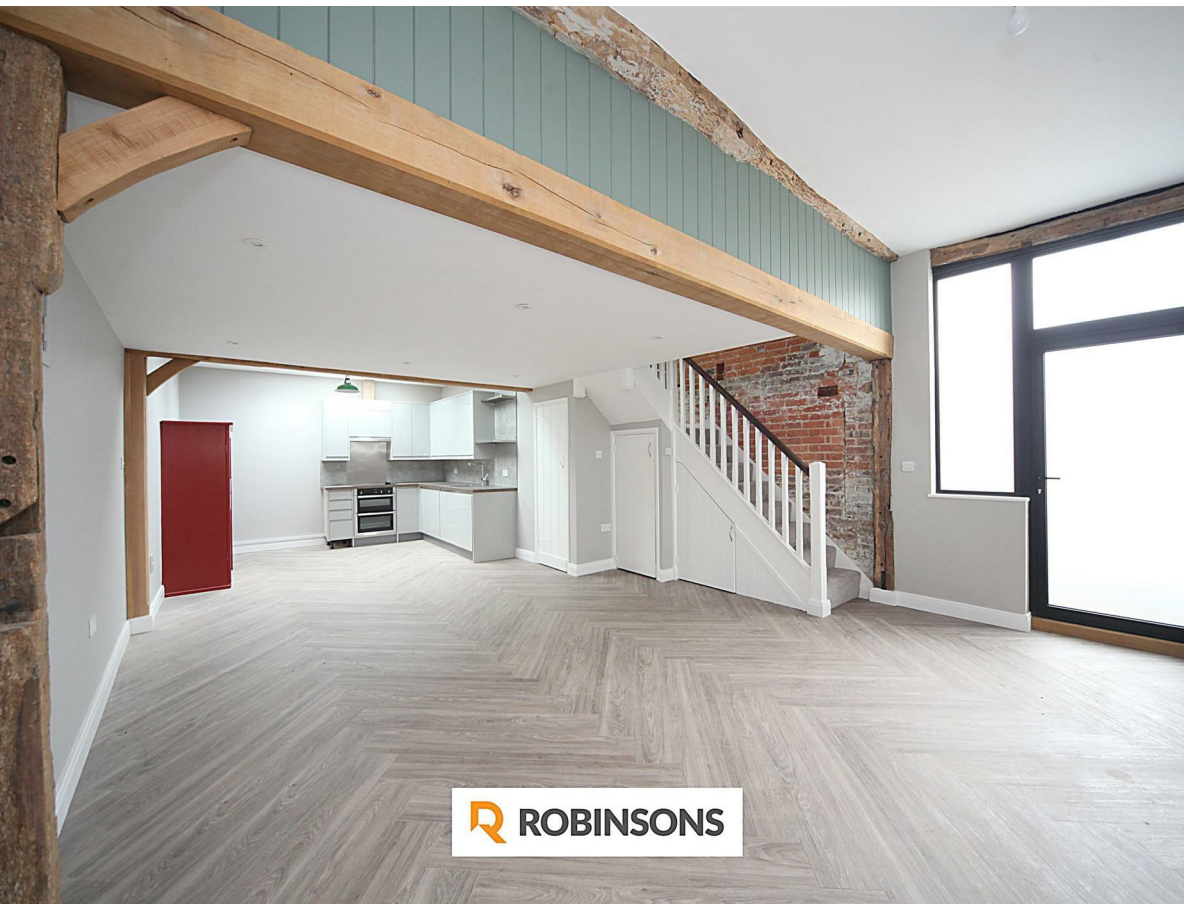


**BROOMSTICK BARN High Street, Edlesborough, Dunstable,
Bedfordshire, LU6 2HS**
£1,250 Per Month



AVAILABLE FEBRUARY BROOMSTICK BARN A ONE BEDROOM BARN CONVERSATION IN EDLESBOROUGH.

Broomstick Barn is an exceptional period property and is a very deceiving property from the outside - the accommodation within is infinitely larger than it appears and has recently been renovated/modernised and upgraded containing a charming blend of the old and the new. The property now features a stylish and high end open plan/versatile living throughout, the ground floor contains a well-equipped fitted kitchen, open plan living/dining experience and a cloakroom WC. The first floor; double bedroom and access to the 4-piece bathroom suite. Situated within one of Buckinghamshire popular villages offering a thriving community with Church, School, Pub, Café, Shops, Hairdressers and Recreation Ground with cricket, football, tennis and gym/pavilion. The towns of Leighton Buzzard and Dunstable are close by each with good day-to-day shopping facilities, and the former has main line station to London (Euston). The County Town of Aylesbury with Grammar Schools, Milton Keynes and Berkhamsted are all within easy reach.



Floorplan produced by Woodside Photography
Floorplan is for illustration purposes only and all measurements are approximate



20 West Street
Dunstable
Bedfordshire
LU6 1SX
01582 661112
sales@robinsons-estates.co.uk
<https://www.robinsons-estates.co.uk>

